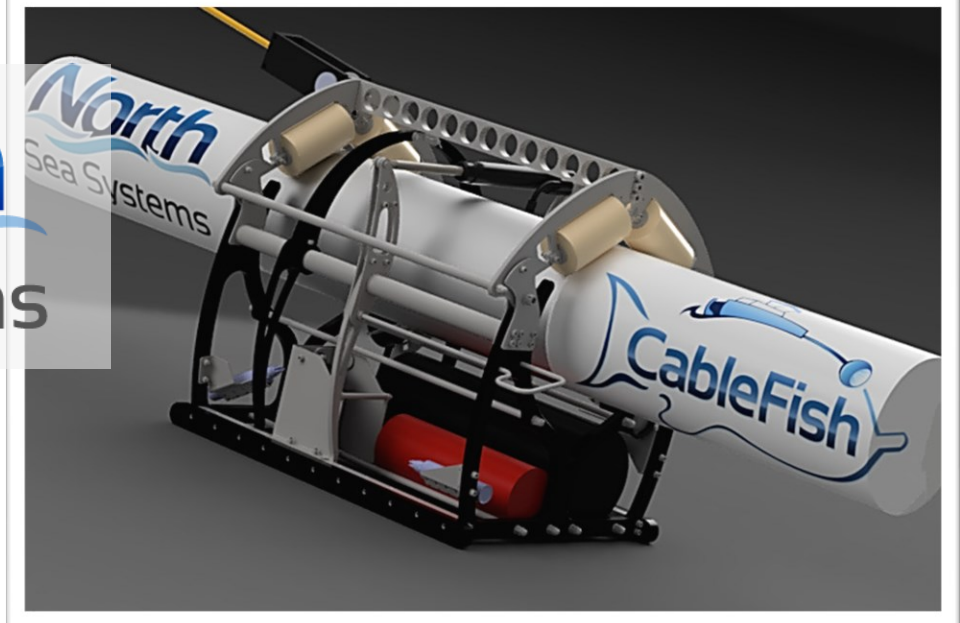


# CableFish® - Touchdown Monitoring Tool

**North**  
Sea Systems



*CableFish® is a cost effective tool for submarine cable installation touchdown monitoring. The system significantly de-risks cable installation by providing continuous visual and position monitoring of the touchdown point in up to 5 knots of tidal flow. The system can be operated in automated mode, reducing manning requirements. The carriage is open and closed via the control panel for safe and simple attachment to cable. CableFish® enables significant cost savings by negating the need for ROVs and post-lay surveys. CableFish® is simple to deploy and operate and will not inhibit the speed of your cable laying operation.*

## **Key benefits:**

- Continuous live images of touchdown during cable lay
- Automated operation
- Remotely operated open/close of carriage for safe cable attachment
- Plots cable lay, eliminating expensive post-lay ROV survey
- Safe and simple to deploy, operate and recover



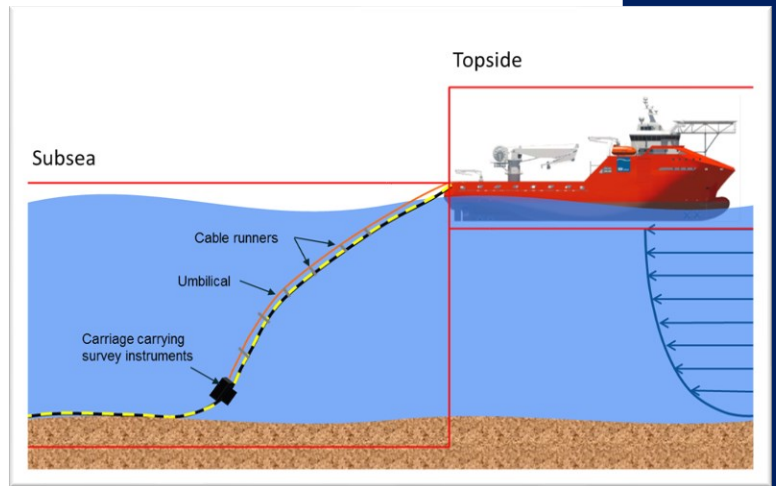
**High Quality Survey Systems for Extreme Marine Environments**

## PERFORMANCE SPECIFICATION

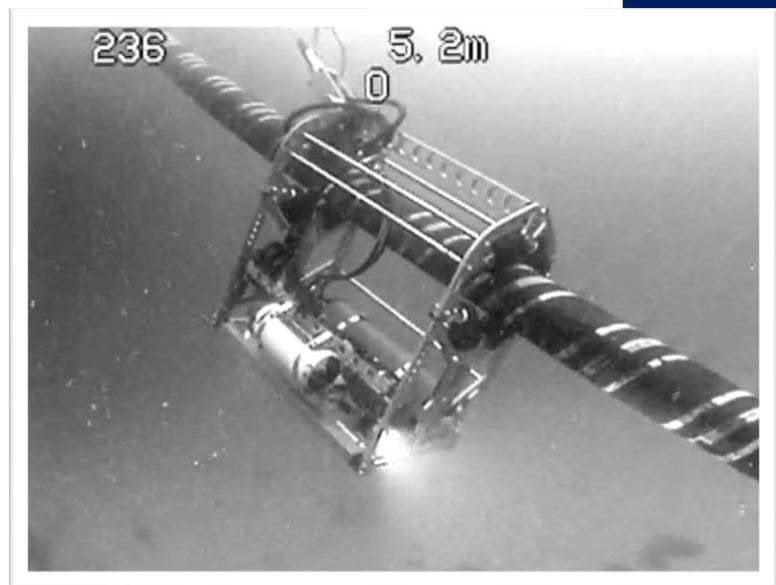
- 5 - 200m water depths
- 5 knot tidal flows
- Adjustable for a range of cable diameters
- Carriage weighs 60kg
- Custom Umbilical Management System for safe efficient operation.
- Operated via PC on ethernet connection

## INSTRUMENT SPECIFICATION

- Two cameras (forward and aft)
- Two LED lights
- Altimeter
- Inclinator
- Sonardyne or Kongsberg USBL beacon
- Sonar is optional



Operating Concept



CableFish in Operation

**North**  
Sea Systems

### Contact us:

Telephone: +44 (0)7801 968986

Email: [info@northseasystems.com](mailto:info@northseasystems.com)

[www.northseasystems.com](http://www.northseasystems.com)



Visual Monitoring

**High Quality Survey Systems for Extreme Marine Environments**