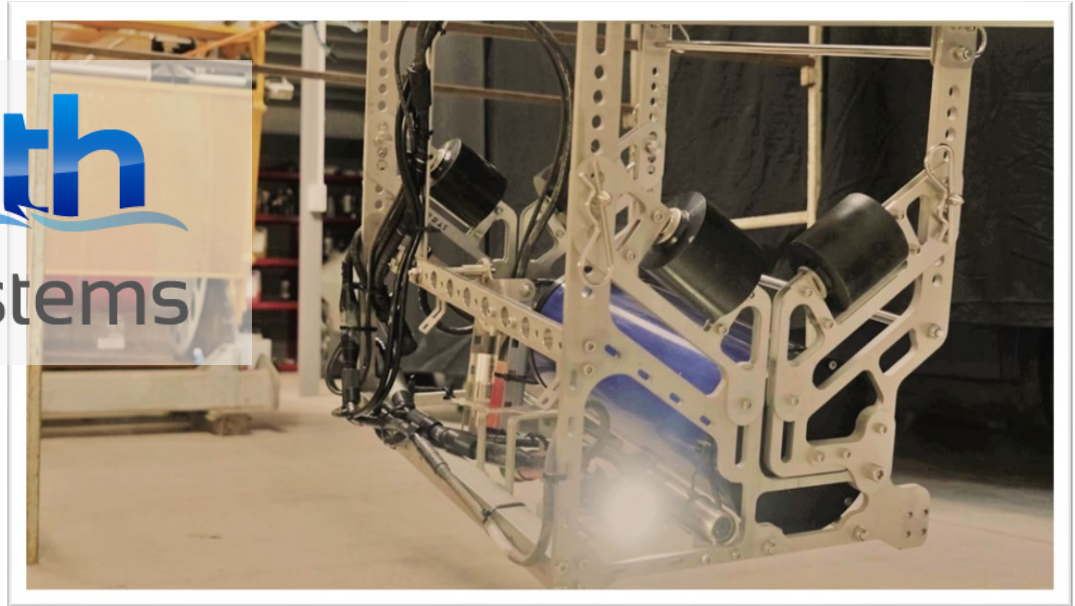


CableFish® - Touchdown Monitoring Tool

North
Sea Systems



CableFish® is a cost effective tool for submarine cable installation touchdown monitoring. The system significantly de-risks cable installation by providing continuous visual and position monitoring of the touchdown point in up to 5 knots of tidal flow. The system can be operated in automated mode, reducing manning requirements. CableFish® enables significant cost savings by negating the need for ROVs and post-lay surveys. CableFish® is simple to deploy and operate and will not inhibit the speed of your cable laying operation.



Key benefits:

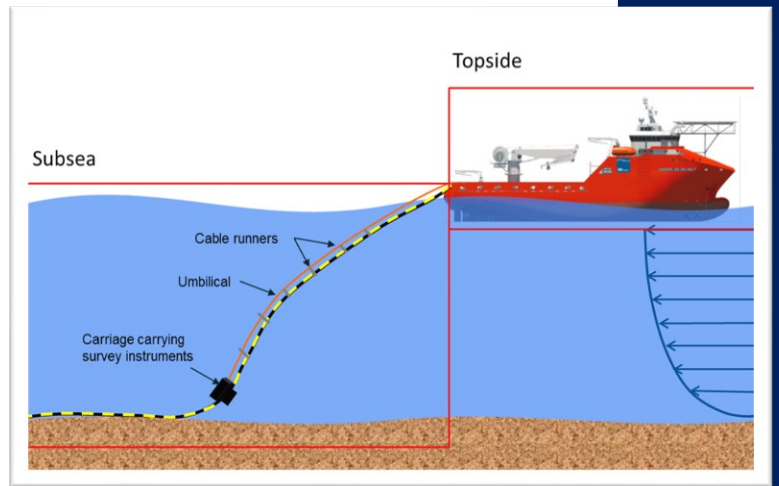
- Continuous live images of touchdown during cable lay.
- Automated operation
- Plots cable lay, eliminating expensive post-lay ROV survey.
- Safe and simple to deploy, operate and recover.

PERFORMANCE SPECIFICATION

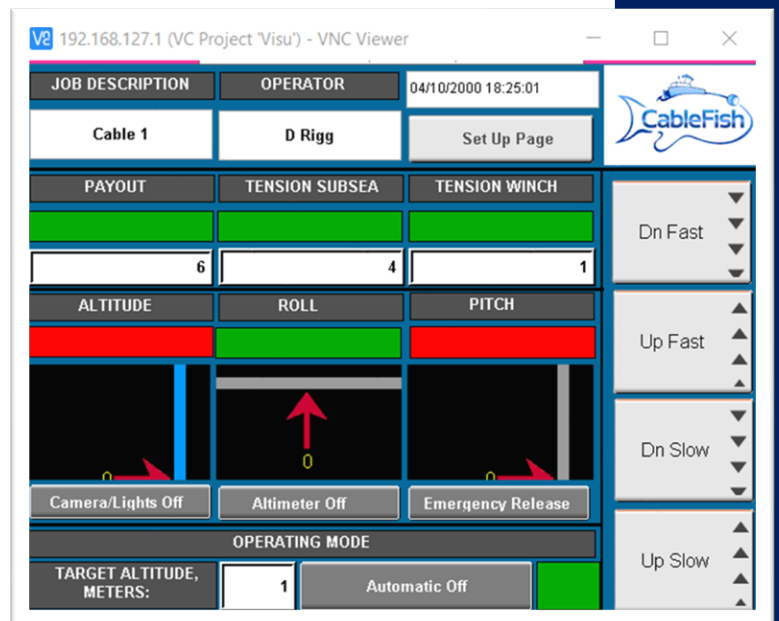
- 5 - 200m water depths
- 5 knot tidal flows
- Adjustable for a range of cable diameters
- Carriage weighs 50kg
- Custom Umbilical Management System for safe efficient operation.
- Operated via PC on ethernet connection

INSTRUMENT SPECIFICATION

- Three cameras (two facing forward, one facing aft)
- Two LED lights
- Altimeter
- Inclinator
- Sonardyne or Kongsberg USBL beacon



Operating Concept



Control Panel



Visual Monitoring

North Sea Systems

Contact us:

Telephone: +44 (0)7801 968986

Email: info@northseasystems.com

www.northseasystems.com

High Quality Survey Systems for Extreme Marine Environments