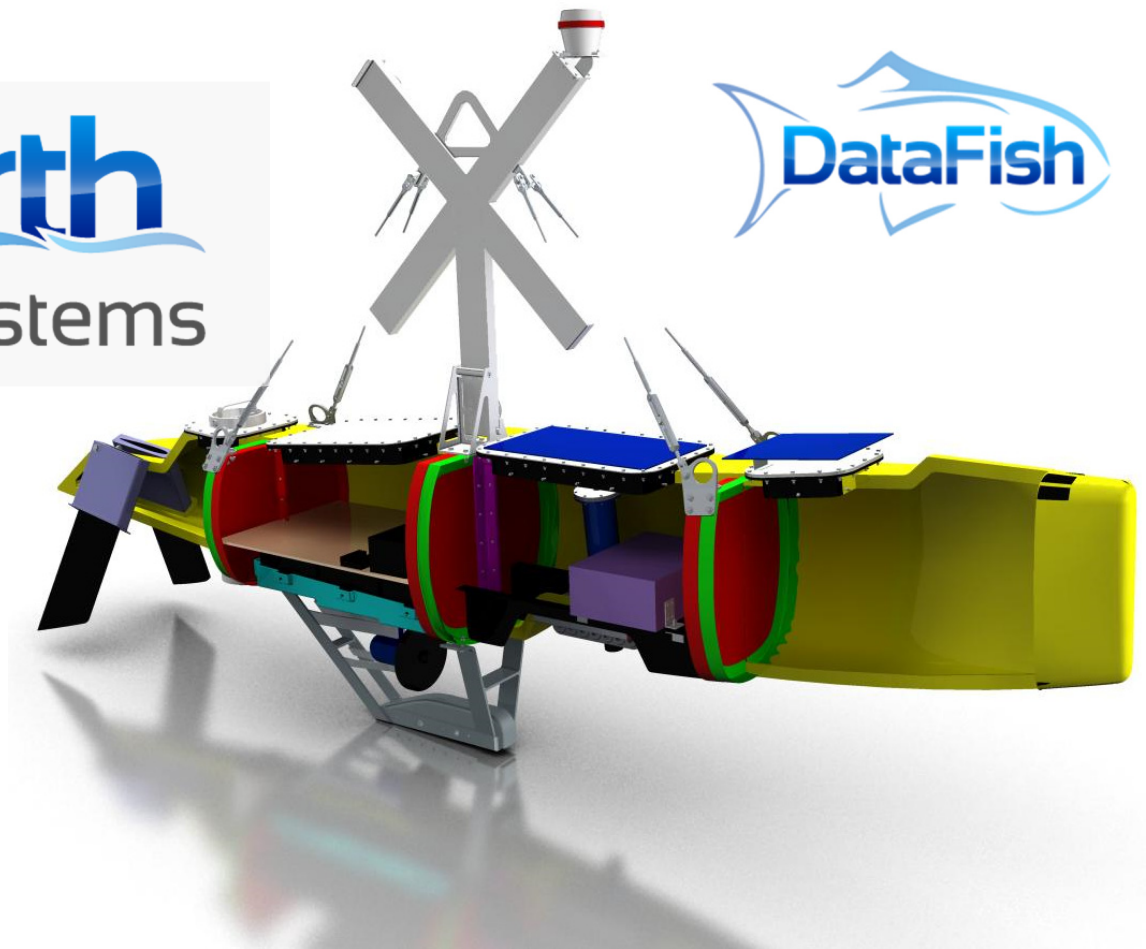


DataFish[®] - Specification

North
Sea Systems



Application

Recording current profiles, wave spectrums, wind and mooring loads in highly energetic marine environments. Transmission system provides real-time access to data.

Operating Parameters

Max Flow	5m/s	Max Wave, H _s	5m
Max Depth	60m	Max Duration	30 days

Operational Features

Navigation	Large yellow special marker, yellow flashing light and radar reflector. Conforms to IALA guidelines. AIS is optional.
Handling	Single lift point on the buoy and lightweight mooring for ease of handling. Can be towed to site or lifted in from a workboat. Trolley enables buoy to be launched from a slip way.

High Quality Survey Systems for Extreme Marine Environments

Technical Specification			
Sub-System	Supplier	Type	Specification
Data Management	Campbell Scientific	CR1000 Datalogger, COM110 GPRS Modem	Samples all sensors at set frequency, stores and timestamps the data. Selected data transmitted by GSM modem at pre-determined intervals.
ADCP	RDI-Teledyne	Workhorse Monitor	600 kHz for depths to 100m. Bottom tracking to eliminate inaccuracies due to movement of buoy.
GPS	Garmin	16x-HVS	Positional information to within +/-1m.
Anemometer	Gill Instruments	Windsonic	Measures wind speed and direction.
Camera (Surface)	Campbell Scientific	CC5MPX	Colour video and stills programmable camera mounted on the mast looking forward.
Camera (Subsea)	Bowtech	LCC-720	Monochrome low light SIT video camera mounted on the anchor.
Load Shackle	Strainstall	Type 4991	Max load 6 Tonne.
Solar Array	Sunware	SW-5065 SW-306	~70W nominal used to charge the battery.
Hydro Generator	AmpAir	UW-100	~100W nominal used to charge the battery.
Battery	Elecsol	660Ah	6 x 110Ah lead acid batteries.
Data	Campbell Scientific	Konect	Web portal provides near real-time data access. Available to download in various formats post QA process.

North Sea Systems is the only company in the UK dedicated to developing and operating survey systems for high-flow environments. We provide premium quality survey information from these highly kinetic environments.

North Sea Systems offers a turn-key solution for metocean survey requirements in support of the offshore renewables industry. Our industry expertise and in-house engineering capability is unparalleled, combining many years of project management with in-depth knowledge of the marine energy sector.



Contact us

North Sea Systems
 26 Commercial Road
 Poole, Dorset
 BH14 0JR
 United Kingdom

Telephone: +44 (0)1202 749365
 Email: info@northseasystems.com
www.northseasystems.com

High Quality Survey Systems for Extreme Marine Environments